

# WaterHog Impressions HD<sup>®</sup> Mats

## Logo • Scraper/Wiper Mats • Indoor/Outdoor

WaterHog Impressions HD mats feature your custom logo or message digitally printed on a WaterHog mat. These mats are ideal for use as a slip-resistant entrance mat to showcase your custom logo or artwork, or in any area where moisture, tracking, or dripping occurs.

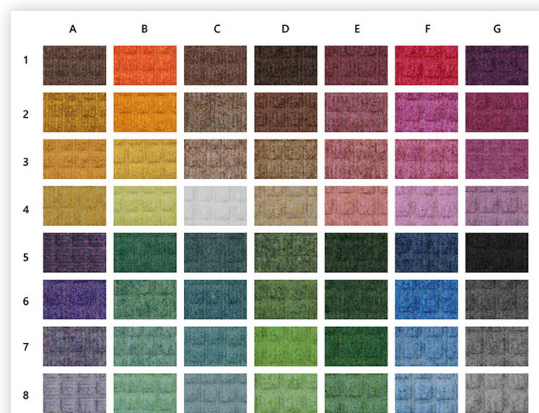


- **Clean & Dry** – Bi-level surface effectively scrapes dirt and moisture from shoes, trapping it beneath shoe level to prevent tracking; water dam border holds moisture keeping it off your floors (WaterHog mats can hold up to 1.5 gallons of water per square yard)
- **Durable** – Reinforced rubber nubs prevent pile from crushing and extend the performance life of the mat
- **Safe** – Beveled edges provide a safe transition from floor to mat; certified high-traction by the National Floor Safety Institute (NFSI)
- **Eco-Friendly** – These mats are made with PET (polyethylene terephthalate), a type of polyester yarn that features 85% recycled content reclaimed from plastic
- 56 standard color options and available with choice of classic rubber border or fashion fabric border
- Features 65-mil nitrile rubber with choice of smooth or universal cleated backing

### 56 Standard Color Options

Display your custom logo/artwork in high definition

Colors may vary due to inconsistencies of various display monitors or printers (if you're viewing a printed version of this document). Color images are intended to be used as a guide only.





# WaterHog Impressions

## HD® Mats

Logo • Scraper/Wiper Mats • Indoor/Outdoor



3/8" Product No. 2381 (classic border)  
3/8" Product No. 2380 (fashion border)

Size (ft.)	Size (in.)	Product Weight (classic)	Product Weight (fashion)
2' x 3'	23" x 35"	4.1 lbs.	3.8 lbs.
3' x 4'	35" x 46"	8.2 lbs.	7.5 lbs.
3' x 5'	35" x 59"	10.5 lbs.	9.7 lbs.
3' x 10'	35" x 118"	21.5 lbs.	19.4 lbs.
3' x 12'	35" x 144"	25.5 lbs.	23.6 lbs.
3' x 16'	35" x 192"	34.0 lbs.	31.5 lbs.
3' x 20'	35" x 239"	42.3 lbs.	39.2 lbs.
4' x 6'	45" x 69"	15.7 lbs.	14.8 lbs.
4' x 8'	45" x 97"	22.1 lbs.	20.5 lbs.
6' x 8'	71" x 97"	34.9 lbs.	32.3 lbs.
6' x 10'	71" x 124"	44.6 lbs.	39.5 lbs.
6' x 12'	71" x 147"	50.6 lbs.	46.9 lbs.
6' x 16'	71" x 196"	66.1 lbs.	62.5 lbs.
6' x 20'	71" x 245"	84.3 lbs.	78.1 lbs.

**Note:** Mat sizes are approximate as rubber shrinks and expands in conjunction with temperature and time. Tolerable manufacturing size variance is 3-5%.



M + A MATTING

800.241.5549

[www.mamattting.com](http://www.mamattting.com)